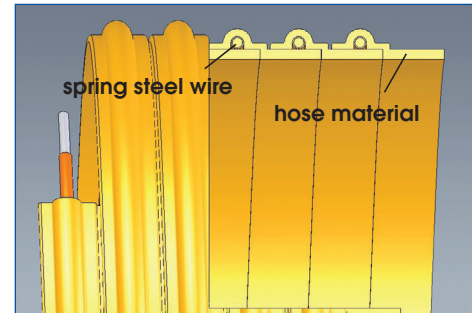
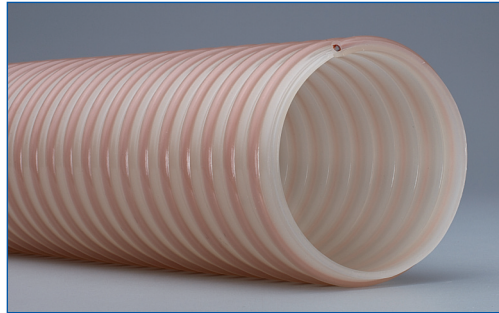


# FLEXADUX® P 3 S PU AS

## Flexible and very heavy weight Polyurethane ducting, antistatic



### Material:

Polyester-Polyurethane.

### Colour:

Translucent.

### Single Length:

10 and 15 m.

### Temperature Resistance:

- 40° up to + 100° C.

### Applications:

Suction and transport of abrasive materials and other bulk stuff for explosion-endangered areas.

### Properties:

Antistatic ( $R \leq 10^8$  Ohm), conform to TRBS 2153, excellent abrasion and vacuum resistance, good resistance to oils and petrols, very smooth bore.

## TECHNICAL DATA

| Dia. mm | Weight kg/m | Mat. Thickness mm | Bend. Rad. mm | Max. Work. Press. bar | Max. Vacuum bar |
|---------|-------------|-------------------|---------------|-----------------------|-----------------|
| 30      | 0,61        | 2,0               | 120           | 4,60                  | 0,95            |
| 35      | 0,72        | 2,0               | 140           | 4,30                  | 0,95            |
| 40      | 0,76        | 2,0               | 160           | 4,20                  | 0,95            |
| 45      | 0,90        | 2,0               | 180           | 4,00                  | 0,95            |
| 50      | 1,00        | 2,0               | 200           | 3,80                  | 0,95            |
| 60      | 1,32        | 2,0               | 240           | 3,30                  | 0,95            |
| 70      | 1,45        | 2,0               | 280           | 3,00                  | 0,95            |
| 75      | 1,51        | 2,0               | 300           | 2,70                  | 0,95            |
| 80      | 1,61        | 2,0               | 320           | 2,40                  | 0,90            |
| 90      | 1,81        | 2,0               | 360           | 2,10                  | 0,90            |
| 100     | 2,13        | 2,0               | 400           | 1,90                  | 0,90            |
| 110     | 2,34        | 2,0               | 440           | 1,75                  | 0,90            |
| 120     | 2,47        | 2,0               | 480           | 1,50                  | 0,90            |
| 125     | 2,56        | 2,0               | 500           | 1,45                  | 0,90            |
| 130     | 3,27        | 2,0               | 520           | 1,40                  | 0,90            |
| 140     | 3,52        | 2,0               | 560           | 1,30                  | 0,90            |
| 150     | 4,08        | 2,0               | 600           | 1,25                  | 0,85            |
| 160     | 4,35        | 2,0               | 640           | 1,10                  | 0,85            |
| 175     | 4,40        | 2,0               | 700           | 1,00                  | 0,85            |
| 180     | 4,50        | 2,0               | 720           | 1,00                  | 0,85            |
| 200     | 5,45        | 2,0               | 800           | 0,95                  | 0,85            |
| 225     | 5,68        | 2,0               | 900           | 0,85                  | 0,85            |
| 250     | 5,90        | 2,0               | 1000          | 0,85                  | 0,75            |
| 300     | 6,20        | 2,0               | 1200          | 0,75                  | 0,40            |
| 350     | 7,10        | 2,0               | 1400          | 0,60                  | 0,30            |

Further diameters available upon request.

Technical data are based on + 20° C.



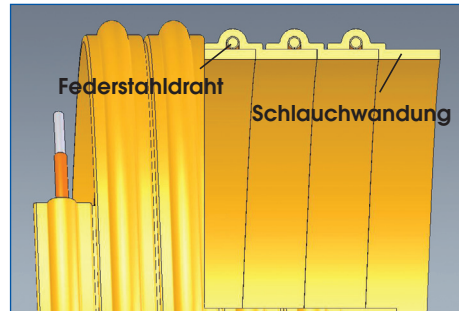
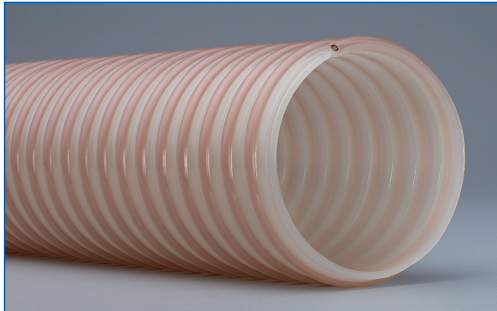
**SCHAUBURG RUHRKUNSTSTOFF GMBH**

Weseler Str. 35 · 45478 Mülheim-Ruhr · Germany · Tel. +49 (0) 2 08 99 91-0 · Fax +49 (0) 2 08 5 33 74 · mail@schauenburg-rk.com



# FLEXADUX® P 3 S PU AS

**Flexibler und sehr schwerer  
Spiralschlauch aus  
Polyurethan, antistatisch**



**Material:**

Polyester-Polyurethan.

**Farbe:**

Transluzent.

**Einzellänge:**

10 und 15 m.

**Temperaturbeständigkeit:**

- 40° bis + 100° C.

**Einsatzgebiete:**

Absaugung und Transport von abrasiven Materialien und anderen Schüttgütern in ex-gefährdeten Bereichen.

**Eigenschaften:**

Antistatisch ( $R \leq 10^8$  Ohm),  
konform zur TRBS 2153,  
sehr gute Abriebfestigkeit,  
gute Zug- und Vakuumbeständigkeit,  
öl- und benzinbeständig,  
sehr glatter Strömungskanal.

## TECHNISCHE DATEN

| NW mm | Gewicht kg/m | Materialstärke mm | Biegeradius mm | Arbeitsdruck max. bar | Vakuum max. bar |
|-------|--------------|-------------------|----------------|-----------------------|-----------------|
| 30    | 0,61         | 2,0               | 120            | 4,60                  | 0,95            |
| 35    | 0,72         | 2,0               | 140            | 4,30                  | 0,95            |
| 40    | 0,76         | 2,0               | 160            | 4,20                  | 0,95            |
| 45    | 0,90         | 2,0               | 180            | 4,00                  | 0,95            |
| 50    | 1,00         | 2,0               | 200            | 3,80                  | 0,95            |
| 60    | 1,32         | 2,0               | 240            | 3,30                  | 0,95            |
| 70    | 1,45         | 2,0               | 280            | 3,00                  | 0,95            |
| 75    | 1,51         | 2,0               | 300            | 2,70                  | 0,95            |
| 80    | 1,61         | 2,0               | 320            | 2,40                  | 0,90            |
| 90    | 1,81         | 2,0               | 360            | 2,10                  | 0,90            |
| 100   | 2,13         | 2,0               | 400            | 1,90                  | 0,90            |
| 110   | 2,34         | 2,0               | 440            | 1,75                  | 0,90            |
| 120   | 2,47         | 2,0               | 480            | 1,50                  | 0,90            |
| 125   | 2,56         | 2,0               | 500            | 1,45                  | 0,90            |
| 130   | 3,27         | 2,0               | 520            | 1,40                  | 0,90            |
| 140   | 3,52         | 2,0               | 560            | 1,30                  | 0,90            |
| 150   | 4,08         | 2,0               | 600            | 1,25                  | 0,85            |
| 160   | 4,35         | 2,0               | 640            | 1,10                  | 0,85            |
| 175   | 4,40         | 2,0               | 700            | 1,00                  | 0,85            |
| 180   | 4,50         | 2,0               | 720            | 1,00                  | 0,85            |
| 200   | 5,45         | 2,0               | 800            | 0,95                  | 0,85            |
| 225   | 5,68         | 2,0               | 900            | 0,85                  | 0,85            |
| 250   | 5,90         | 2,0               | 1000           | 0,85                  | 0,75            |
| 300   | 6,20         | 2,0               | 1200           | 0,75                  | 0,40            |
| 350   | 7,10         | 2,0               | 1400           | 0,60                  | 0,30            |

Weitere Abmessungen auf Anfrage lieferbar.  
Technische Daten gemessen bei + 20° C.

