



# PAINTED STEEL with ABS spool

Series 430

Painted steel bracket



In accordance with directive  
Atex 94/9 II 3 GD c X



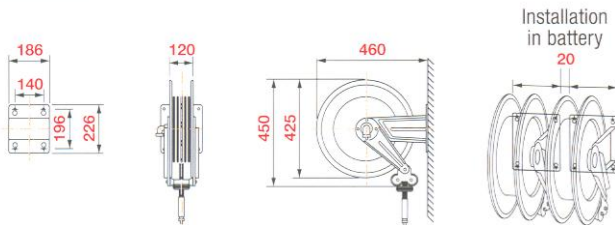
ABS shock proof drum

Supplied with:  
- hoses in black synthetic rubber  
- zinc plated steel couplings



Article	FIXED support	Connection		
		inlet	outlet	
<b>Air - Water 20 bar</b> - bras swivel joint - "viton" seals	9430.100	without hose	F1/2"G	F1/2"G
	9430.101	12m - 3/8" (995.212)	F1/2"G	M3/8"G
	9430.102	18m - 3/8" (995.218)	F1/2"G	M3/8"G
	9430.103	10m - 1/2" (996.210)	F1/2"G	M1/2"G
	9430.104	15m - 1/2" (996.215)	F1/2"G	M1/2"G
<b>Water max 130° C 100 bar</b> - AISI 304 stainless steel swivel joint - "viton" seals	9430.200	without hose	F1/2"G	F1/2"G
	9430.201	10m - 1/2" (996.311)	F1/2"G	M1/2"G
	9430.202	15m - 1/2" (996.316)	F1/2"G	M1/2"G
	hygieninc hose 9431.202	15m - 1/2" (996.415)	F1/2"G	M1/2"G
<b>Water max 130° C 200 bar</b> - AISI 304 stainless steel swivel joint - "viton" seals	9430.300	without hose	F3/8"G	F1/2"G
	9430.301	12m - 3/8" (995.512)	F3/8"G	F3/8"G
	9430.302	18m - 3/8" (995.518)	F3/8"G	F3/8"G
	hygieninc hose 9431.302	18m - 3/8" (995.618)	F3/8"G	F3/8"G
<b>Oil and similar products 150 bar</b> - carbon steel swivel joint - "polyurethane" seals	9430.400	without hose	F1/2"G	F1/2"G
	9430.401	10m - 1/2" (996.310)	F1/2"G	M1/2"G
	9430.402	15m - 1/2" (996.315)	F1/2"G	M1/2"G
<b>Grease 600 bar</b> - carbon steel swivel joint - "polyurethane" seals	9430.500	without hose	F3/8"G	F1/2"G
	9430.501	12m - 1/4" (993.512)	F3/8"G	M1/4"G
	9430.502	18m - 1/4" (993.518)	F3/8"G	M1/4"G
	9430.505	10m - 3/8" (995.710)	F3/8"G	M1/4"G
	9430.506	15m - 3/8" (995.715)	F3/8"G	M1/4"G

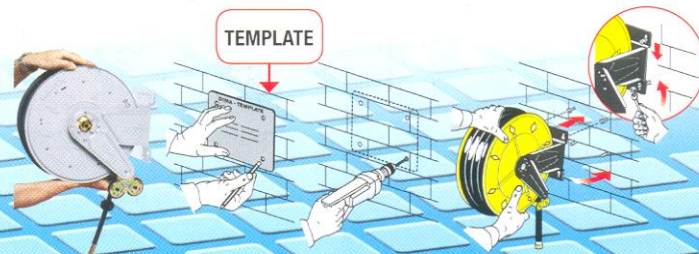
## FIXED OVERALL DIMENSIONS



N°1 packing m³ 0,098 from kg 14 to 24

## FIXED HOSE REELS INSTALLATION

The quick coupling support is equipped with 4 slot holes that allow an easy and safe installation of the hose reel.  
The **template** supplied facilitates drilling of the holes and there fore hose reel fixing.



TEMPLATE